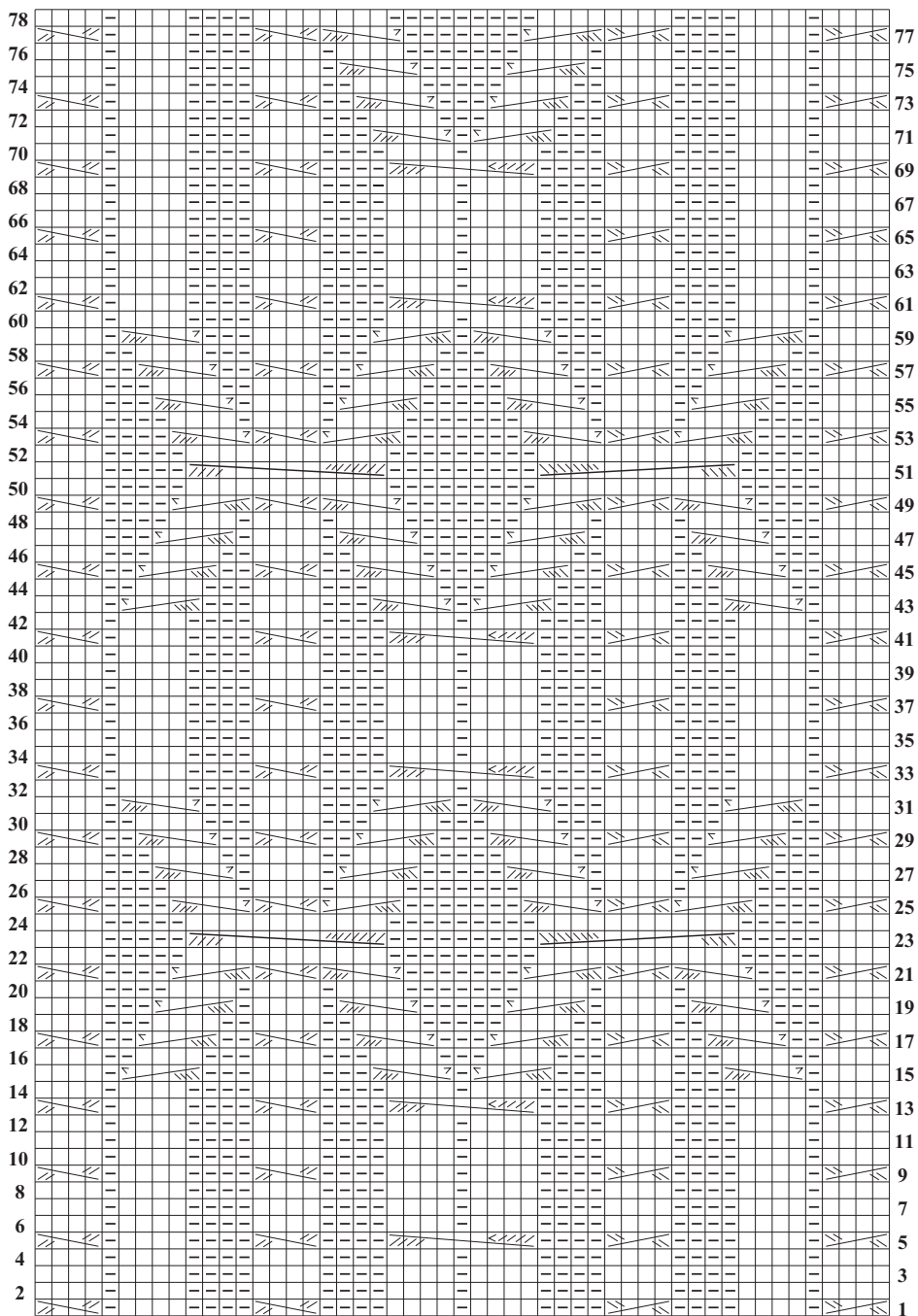


BODY CHART



51 sts

Stitch Key

	K on RS, p on WS		5-st RPC
	P on RS, k on WS		5-st LPC
	4-st RC		9-st LPC
	4-st LC		12-st RC
			12-st LC

NOTE: In Stitch Glossary (in instructions) 9-st LC should have been identified as 9-st LPC.