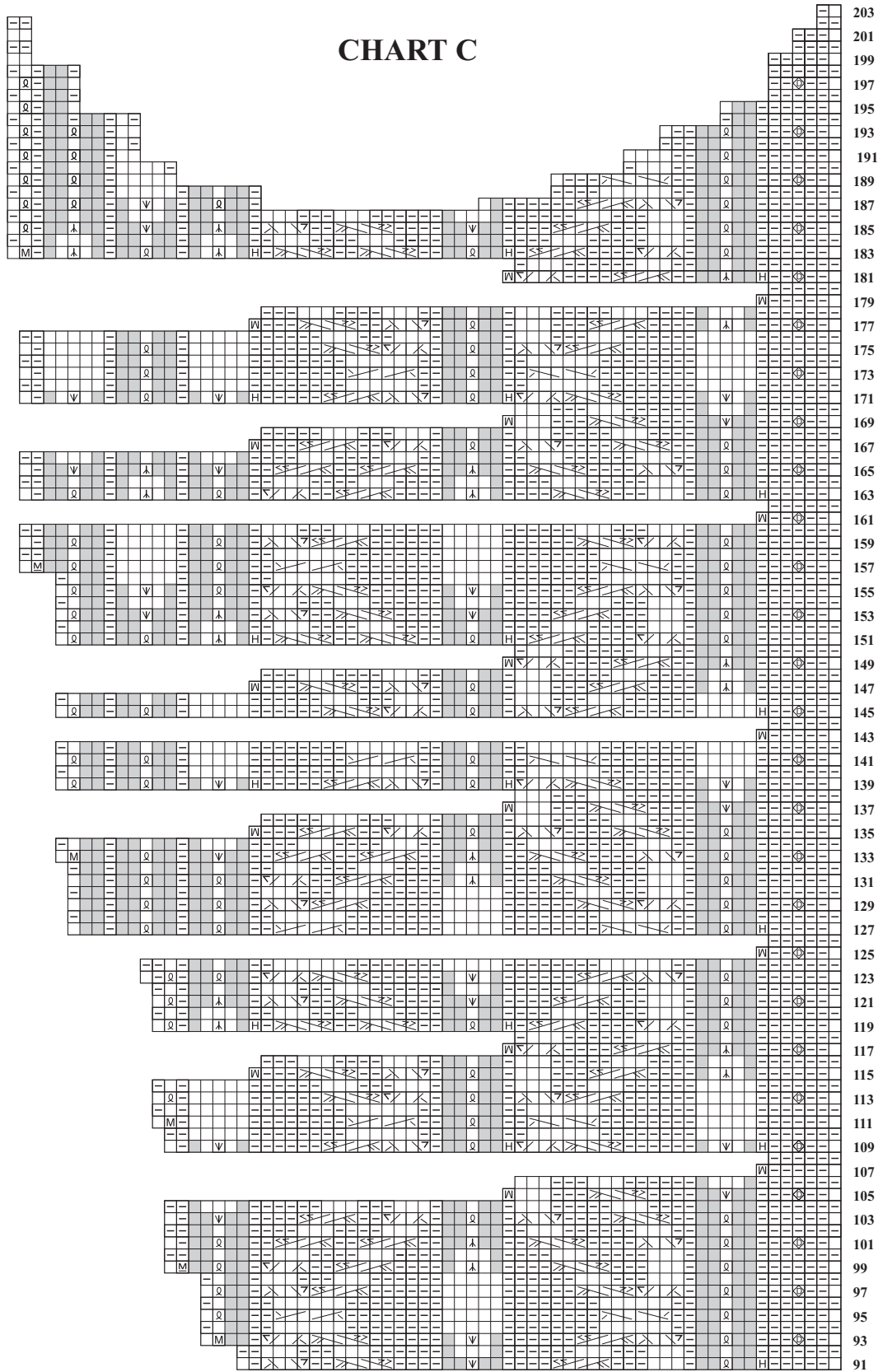


26 MEDALLION SCARF

In Holiday 2009, individually knit medallions joined to cabled strips to create a crescent-shaped scarf. Designed by Mari Tobita. Shown in one size on page 74. Instructions begin on page 109.



26 MEDALLION SCARF

In Holiday 2009, individually knit medallions joined to cabled strips to create a crescent-shaped scarf. Designed by Mari Tobita. Shown in one size on page 74. Instructions begin on page 109.

Note: Page 2 of the chart overlaps Page 1 from rows 91–107.

Stitch Key

- K on RS, p on WS
- P on RS, k on WS
- SKP
- M1 knit
- M1 purl
- Loop cast on 1 st
- W Wrap st and turn (on RS rows, work purl wrap; on WS rows, work knit wrap)
- H Hide wrap (on RS rows, purl wrap and st tog; on WS rows, knit wrap and st tog)
- C2B
- C3L
- C4B
- T5B
- T5F
- C6B
- C6F
- T4L
- T4R
- Make Bobble d
- No stitch
- Ktbl
- Inc 2
- S2KP

