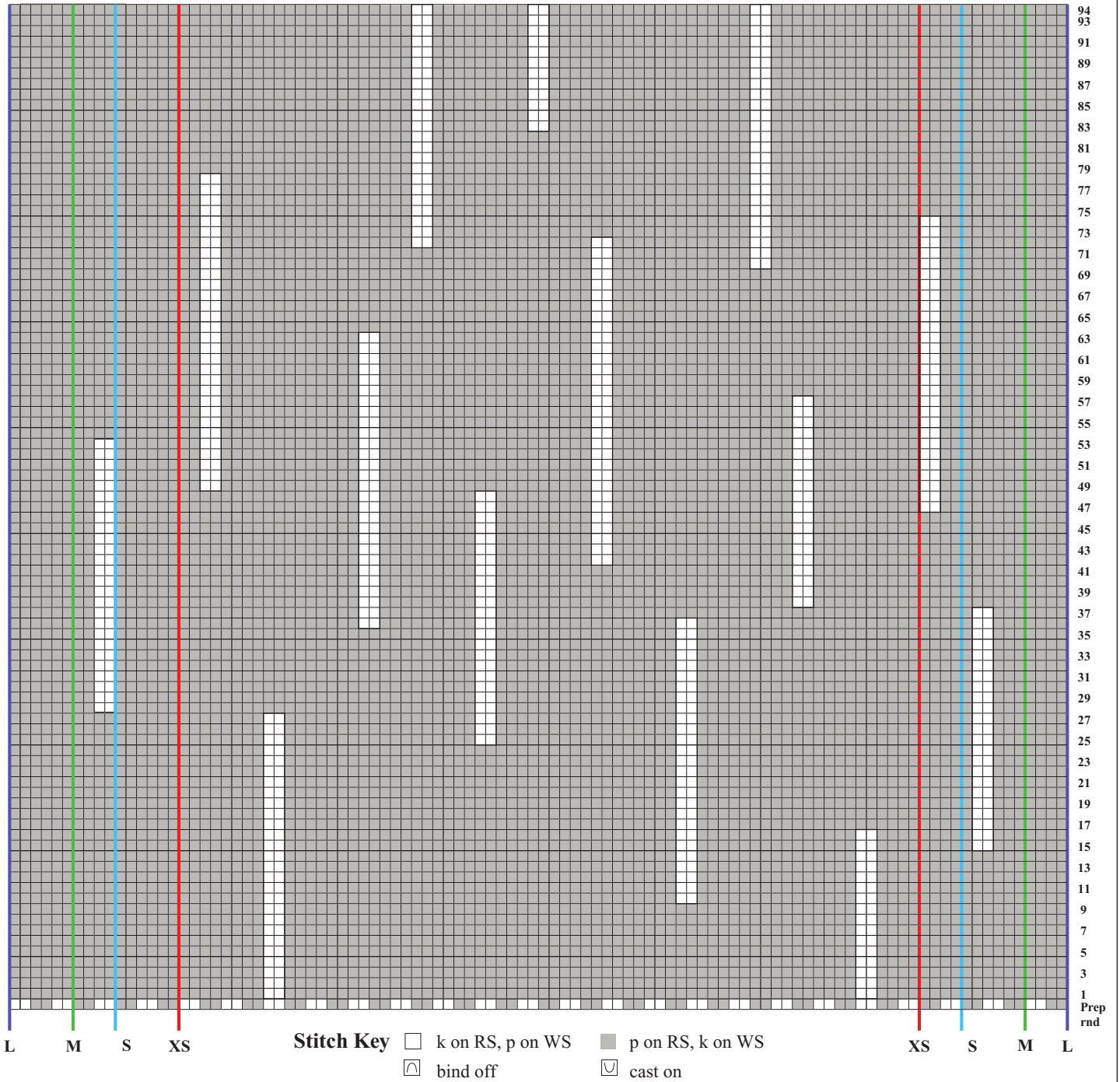


# 11 SCOOP NECK TOP

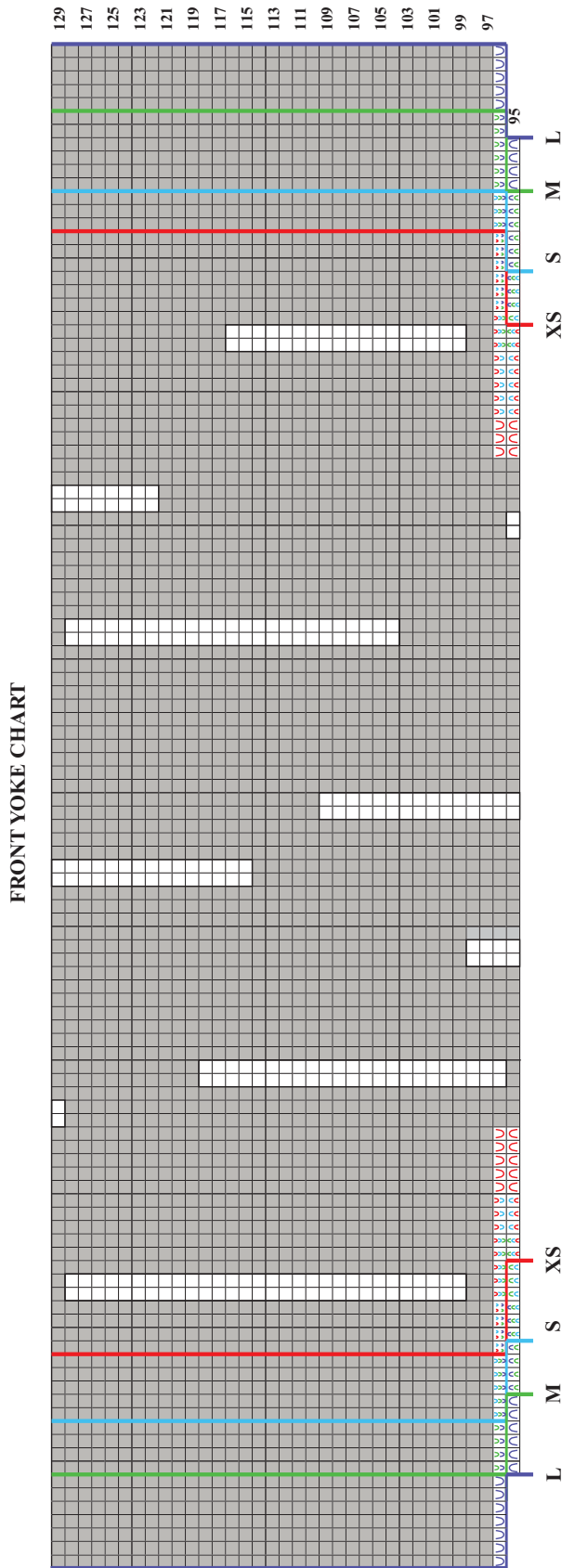
Close-fitting, short sleeved top worked in the round with strips of knit stitches worked randomly on a background of reverse stockinette stitch. Sized for X-Small, Small, Medium, Large and shown in size Small on page 69.

FRONT BODY CHART



# 11 SCOOP NECK TOP

Close-fitting, short sleeved top worked in the round with strips of knit stitches worked randomly on a background of reverse stockinette stitch. Sized for X-Small, Small, Medium, Large and shown in size Small on page 69.



**Stitch Key**

- k on RS, p on WS
- p on RS, k on WS
- bind off
- cast on

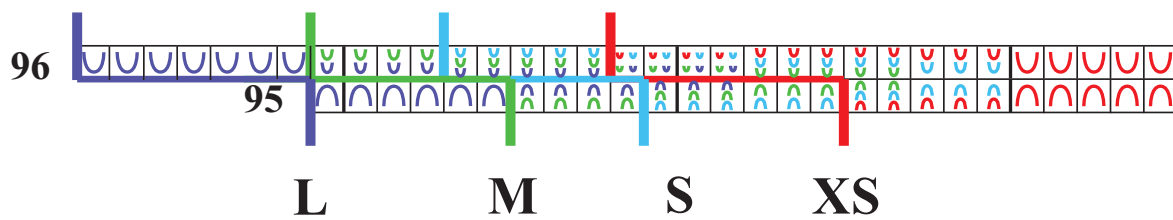
See next page for detailed view of armhole shaping.

# 11 SCOOP NECK TOP

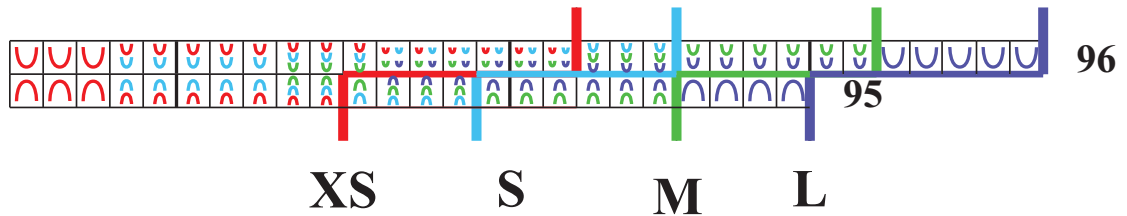
Close-fitting, short sleeved top worked in the round with strips of knit stitches worked randomly on a background of reverse stockinette stitch. Sized for X-Small, Small, Medium, Large and shown in size Small on page 69.

## FRONT ARMHOLE DETAIL VIEW

### Right Armhole



### Left Armhole



**Stitch Key**

<input type="checkbox"/>	k on RS, p on WS	<input type="checkbox"/>	p on RS, k on WS
<input type="checkbox"/>	bind off	<input type="checkbox"/>	cast on