

14 SWALLOW PULLOVER

Shown in *VK Holiday 2008* on page 76. Instructions begin on page 145.

CHART 1

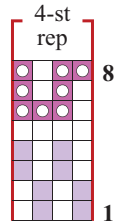
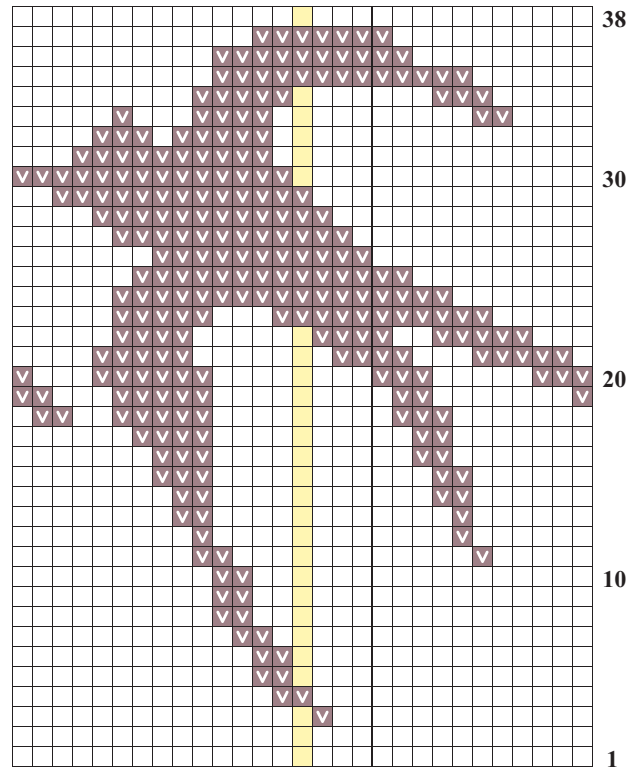
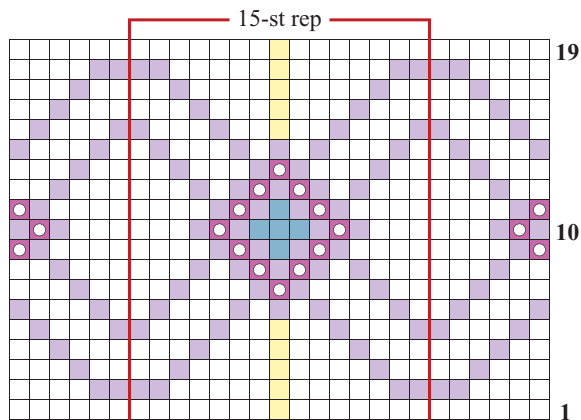


CHART 2 (duplicate st)



Center st (29 sts)

CHART 3



Center st (27 sts)

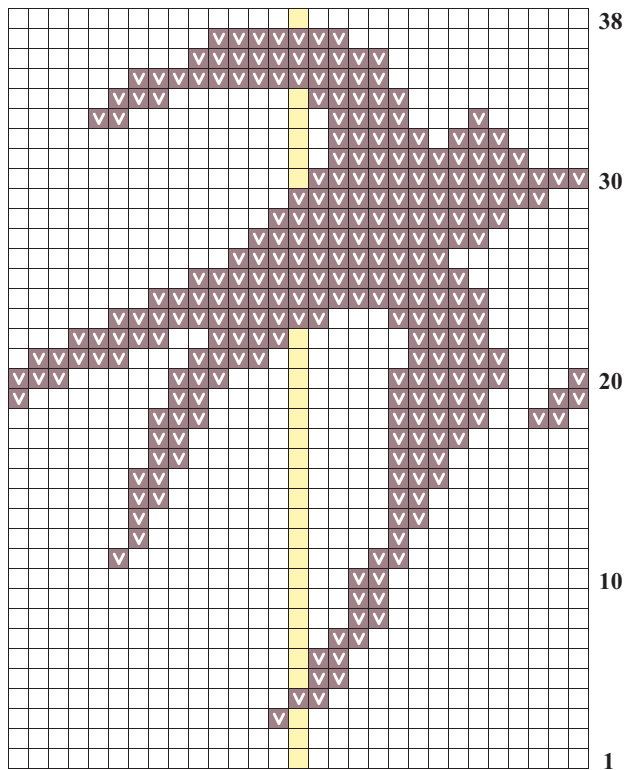
Color Key

- Pewter (A)
- v Ocean floor (B)
- o Passion flower (C)
- Amethyst (D)
- Winkie's blue (E)
- x Silver (F)
- Center stitch

14 SWALLOW PULLOVER (CONTINUED)

Shown in *VK* Holiday 2008 on page 76. Instructions begin on page 145.

CHART 4 (duplicate st)



Center st (29 sts)

Color Key

- Pewter (A)
- v Ocean floor (B)
- ◻ Passion flower (C)
- Amethyst (D)
- Winkie's blue (E)
- * Silver (F)
- Center stitch

CHART 5

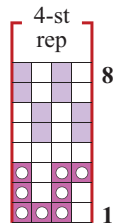
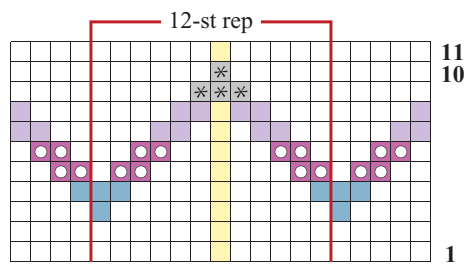


CHART 6



Center st (21 sts)