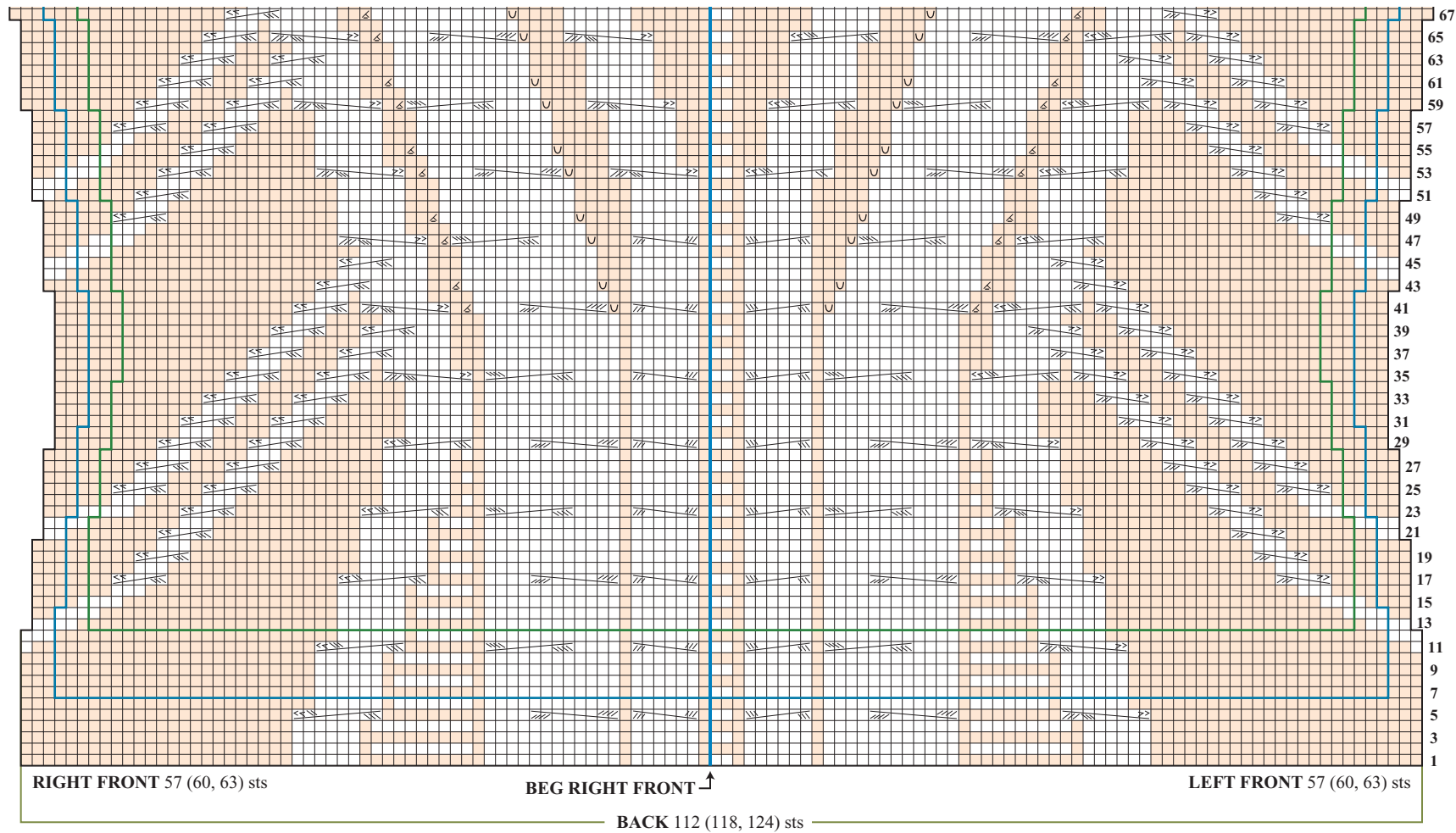


## 29 SLANT CABLE JACKET (BACK & FRONT)

Shown in *V/K* Fall 2008 on page 106.  
Original instructions on pages 144 & 145.



The correction is underlined.

### LEFT FRONT

With smaller needles, cast on 51 (54, 57) sts. K 12 rows. Change to larger needles.

**Inc row (RS)** K2, p20 (21, 22), k1, kfb, k1, kfb, p1, k5 (7, 9), p1, [k1, kfb] 4 times, p1, k6, p1, k2 —57 (60, 63) sts.

### NOTE

For left front, the chart will end at st 63 for all sizes. Work foll the right side of chart (for left front) and cont through row 112. There are 59 (62, 65) sts at this point.

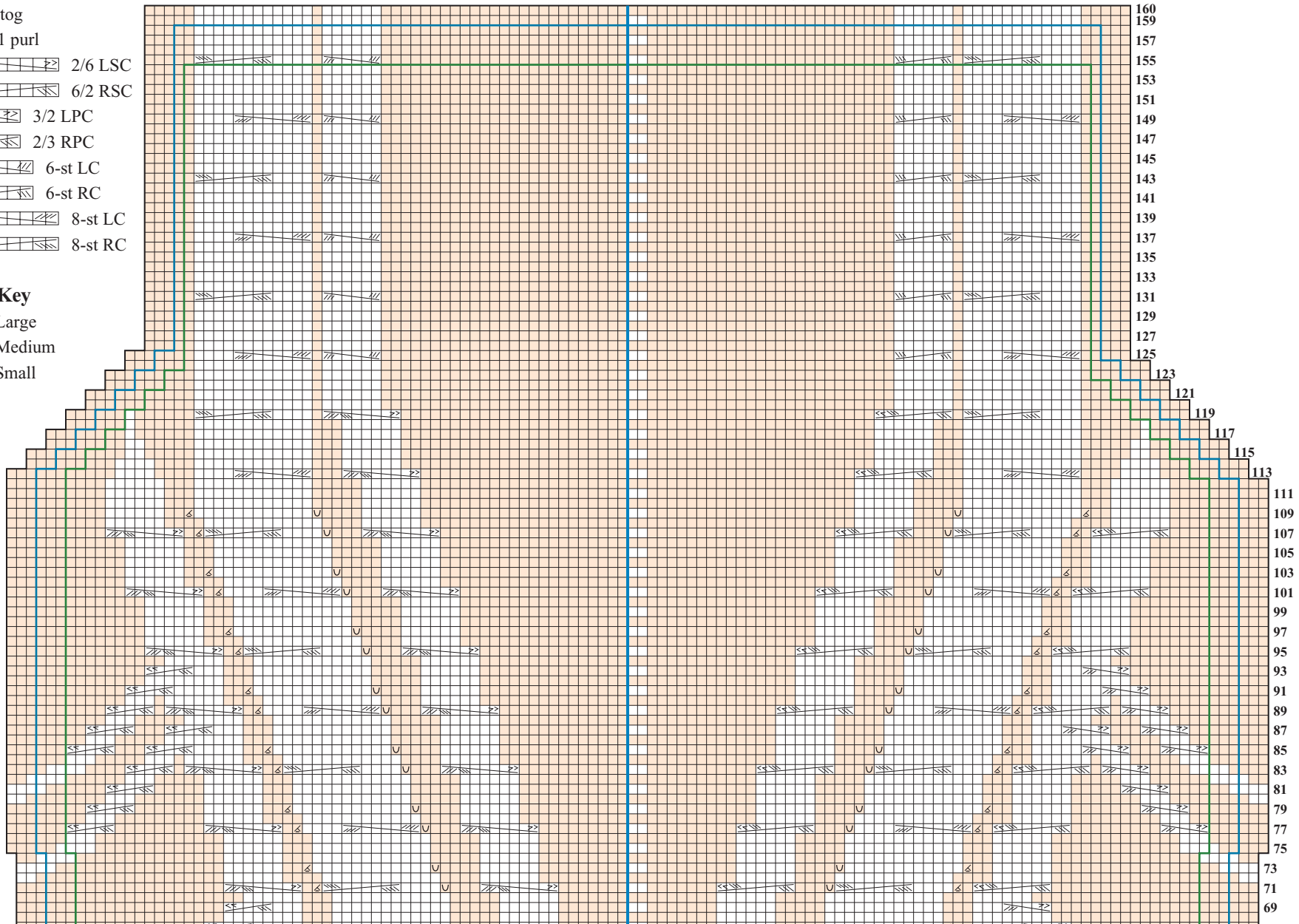
**Stitch Key**

- K on RS, p on WS
- P on RS, k on WS
- P2tog
- M1 purl
- 2/6 LSC
- 6/2 RSC
- 3/2 LPC
- 2/3 RPC
- 6-st LC
- 6-st RC
- 8-st LC
- 8-st RC

**Size Key**

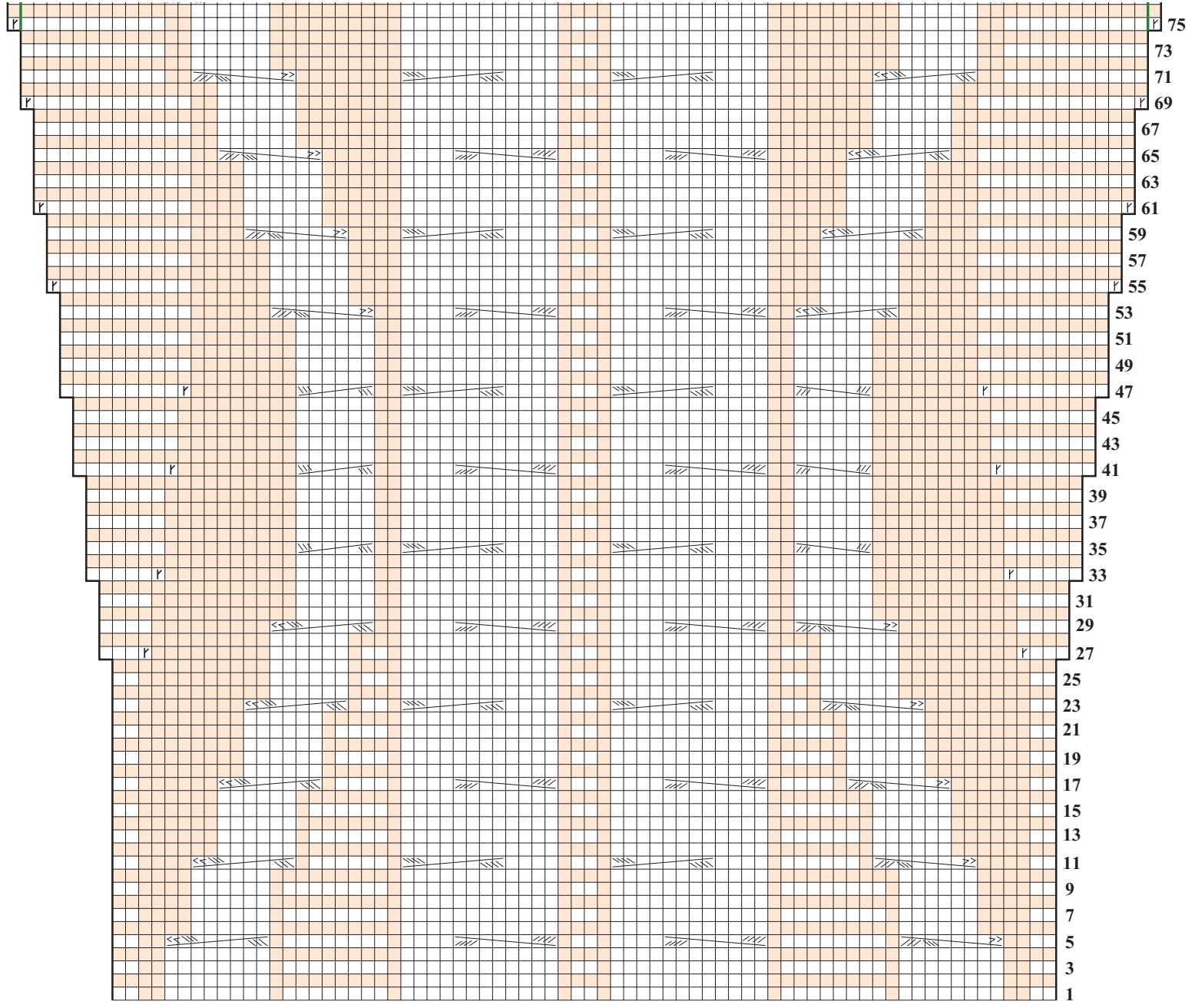
- Large
- Medium
- Small

**BACK & FRONT**  
See instructions for all neck shaping



# 29 SLANT CABLE JACKET (SLEEVE)







Shown in 1/K Fall 2008 on page 106. Instructions on pages 144 & 145.



# SLEEVE

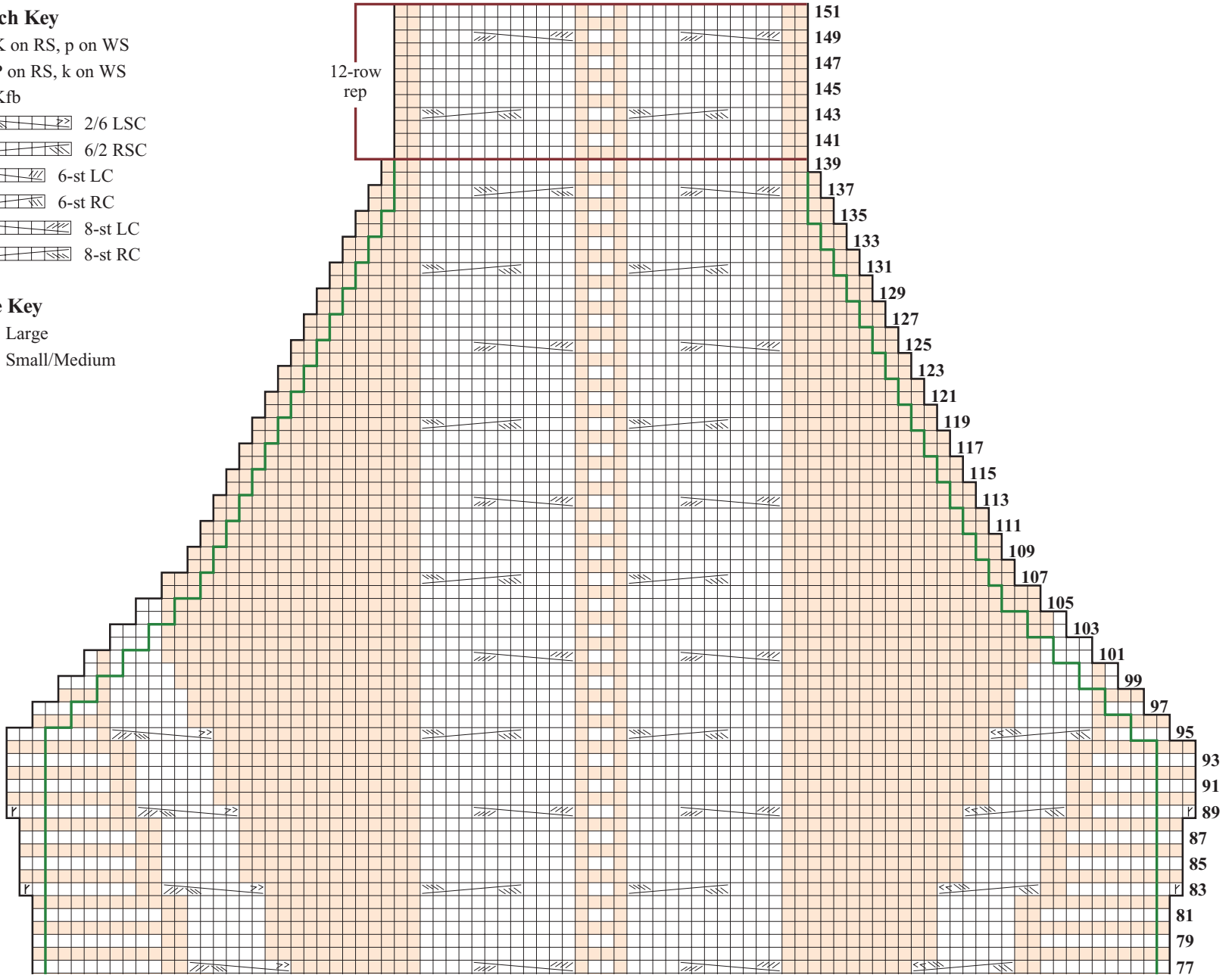
32 sts

## Stitch Key

- K on RS, p on WS
- P on RS, k on WS
- ▣ Kfb
-  2/6 LSC
-  6/2 RSC
-  6-st LC
-  6-st RC
-  8-st LC
-  8-st RC

## Size Key

- Large
- Small/Medium



## 29 SLANT CABLE JACKET (SCHEMATIC)

Shown in *VK* Fall 2008 on page 106. Instructions on pages 144 & 145.

