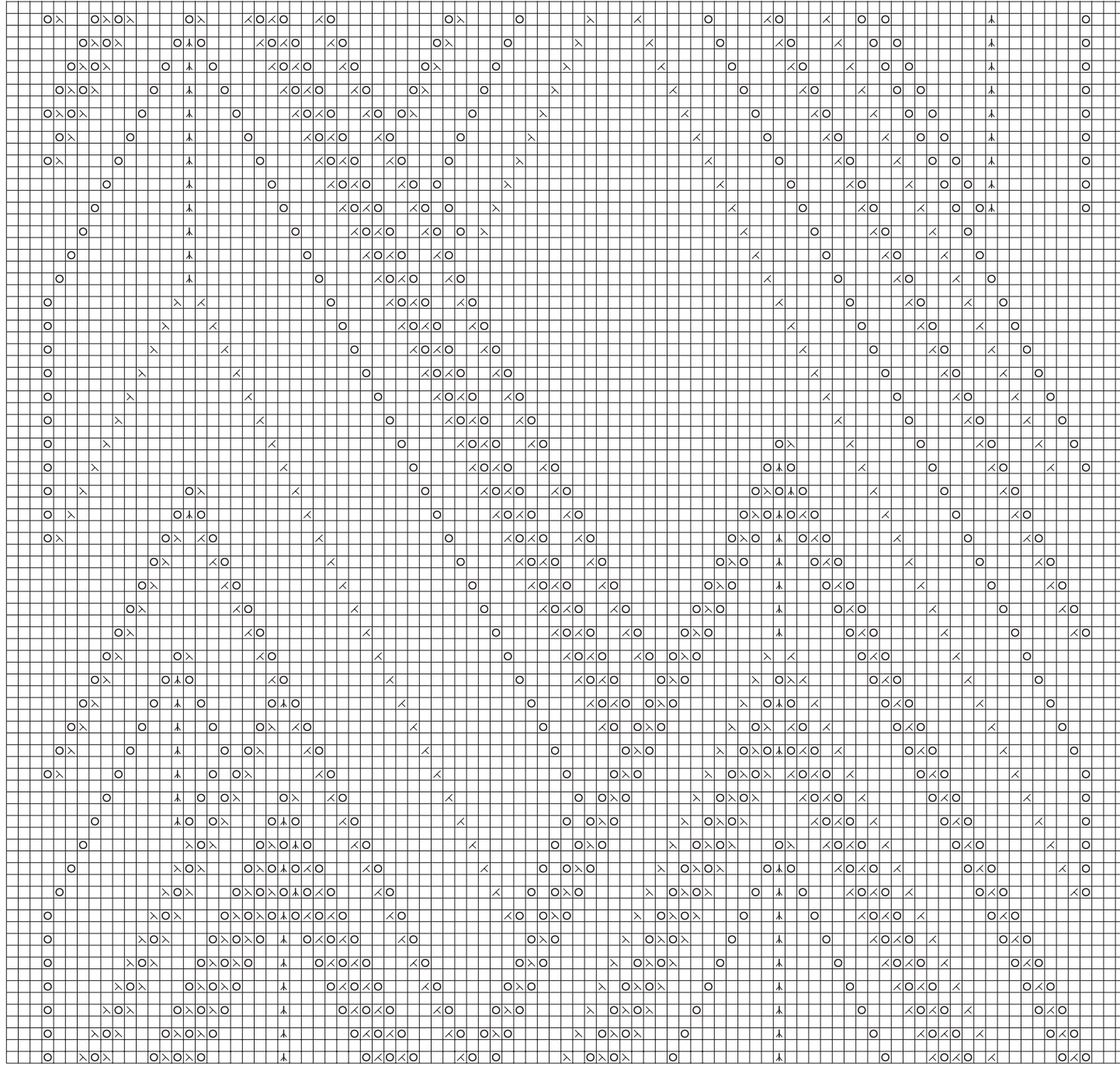


28 V-NECK PULLOVER

Shown in 1/K Spring/Summer 2008 on page 86. Instructions on page 120.



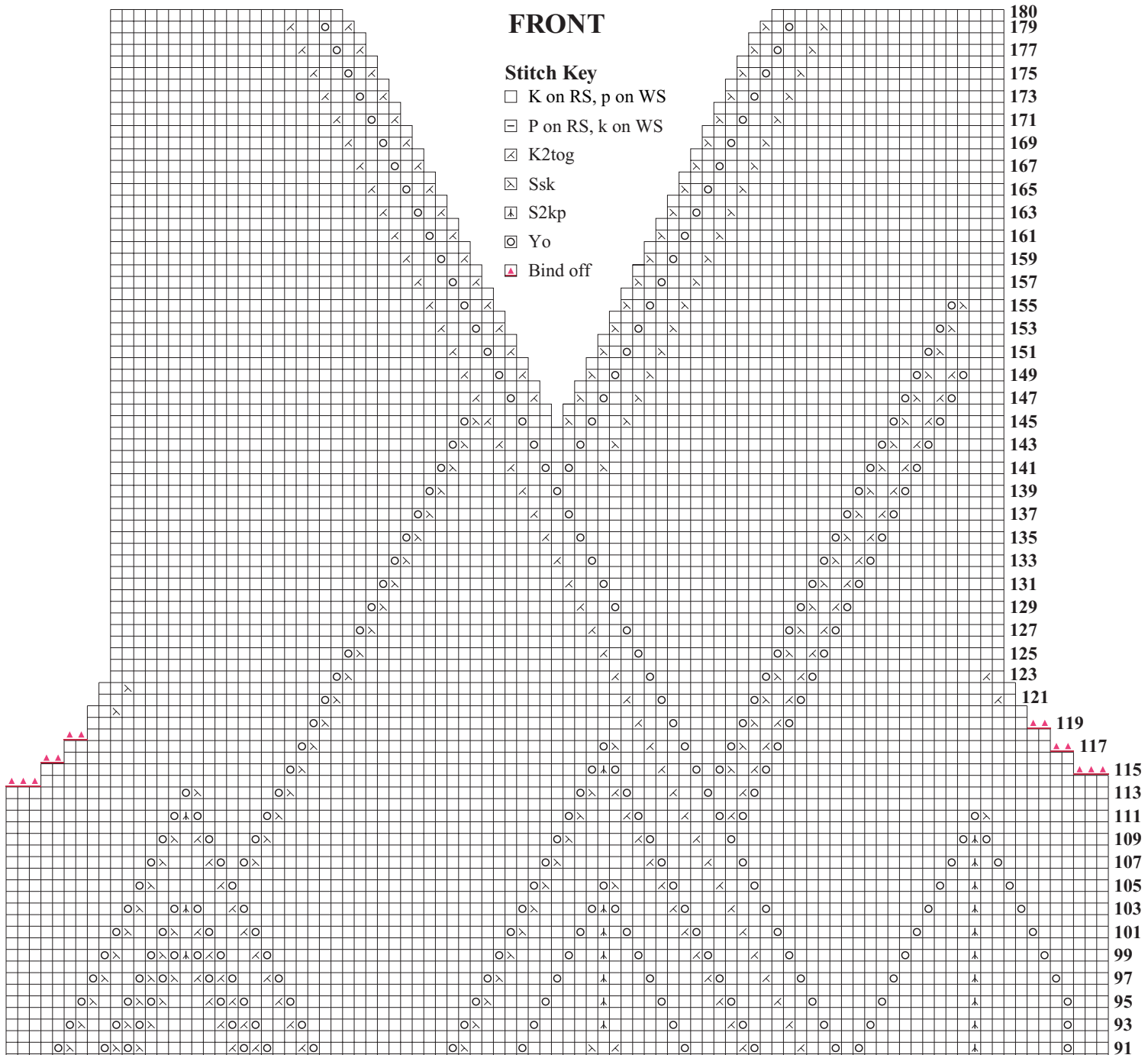
95 sts

89 90
87
85
83
81
79
77
75
73
71
69
67
65
63
61
59
57
55
53
51
49
47
45
43
41
39
37
35
33
31
29
27
25
23
21
19
17
15
13
11
9
7
5
3
1

FRONT

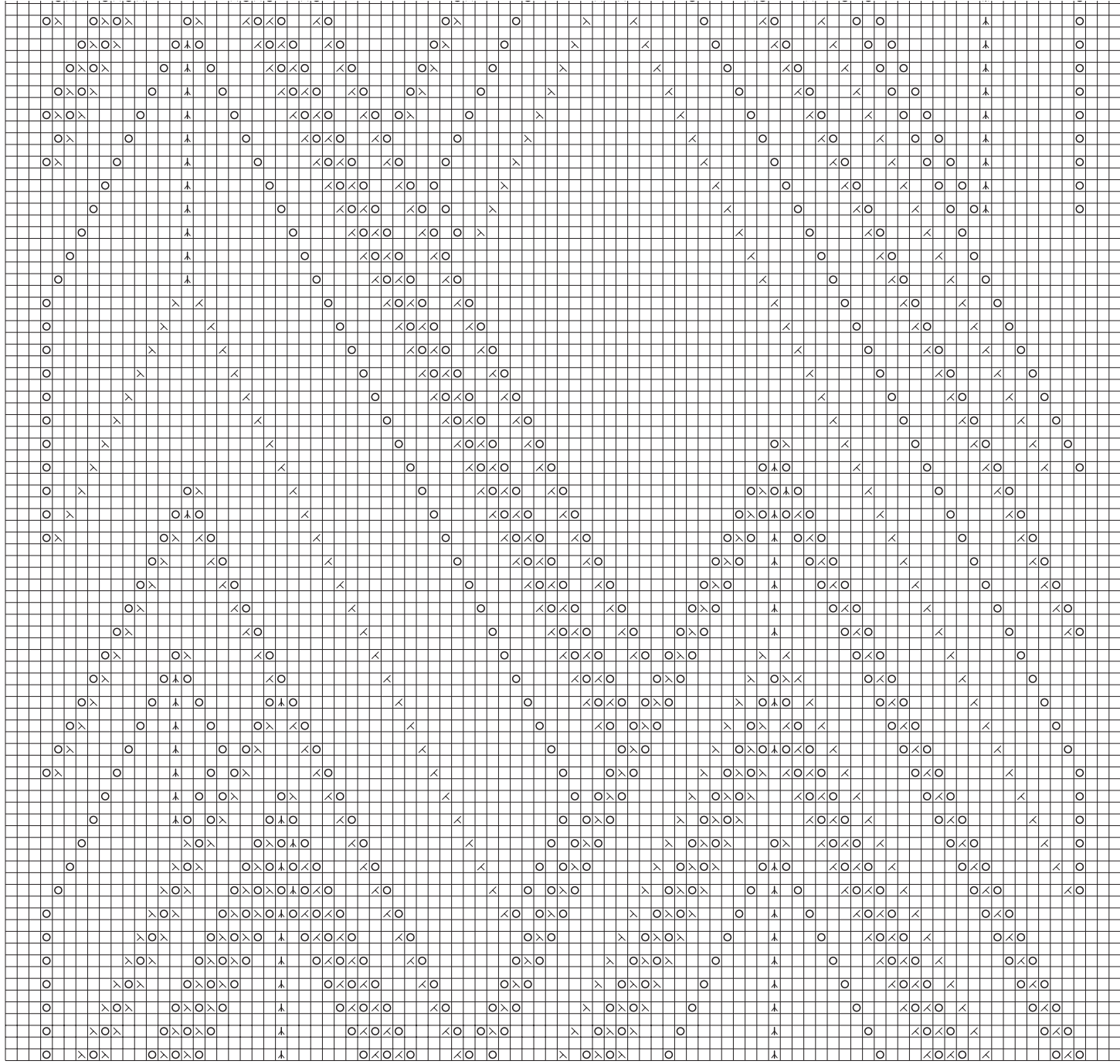
Stitch Key

- K on RS, p on WS
- ▣ P on RS, k on WS
- ⊠ K2tog
- ⊞ Ssk
- ⊟ S2kp
- ⊙ Yo
- ▲ Bind off



180
179
177
175
173
171
169
167
165
163
161
159
157
155
153
151
149
147
145
143
141
139
137
135
133
131
129
127
125
123
121
119
117
115
113
111
109
107
105
103
101
99
97
95
93
91

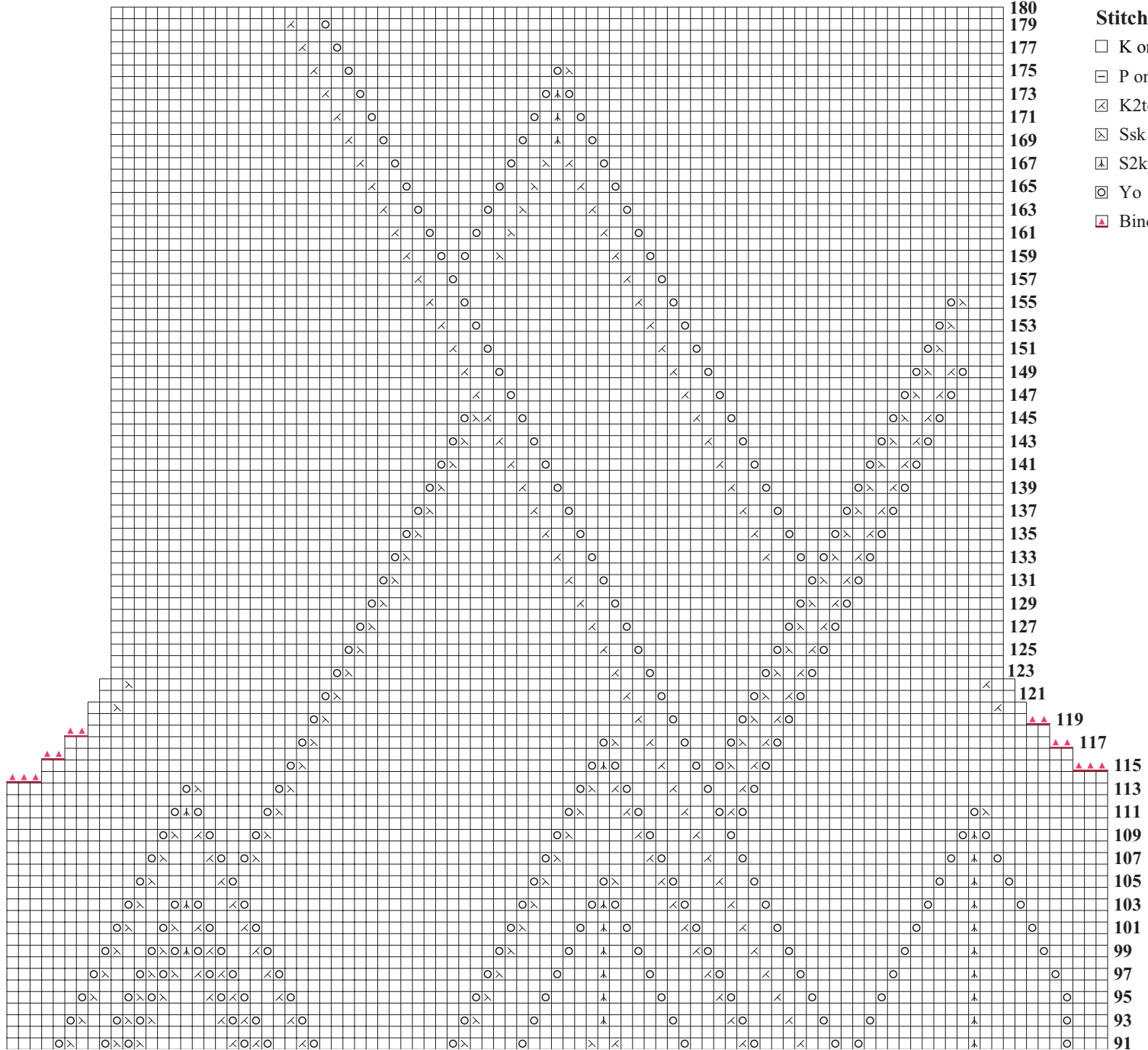
28 V-NECK PULLOVER



95 sts

89
87
85
83
81
79
77
75
73
71
69
67
65
63
61
59
57
55
53
51
49
47
45
43
41
39
37
35
33
31
29
27
25
23
21
19
17
15
13
11
9
7
5
3
1

BACK

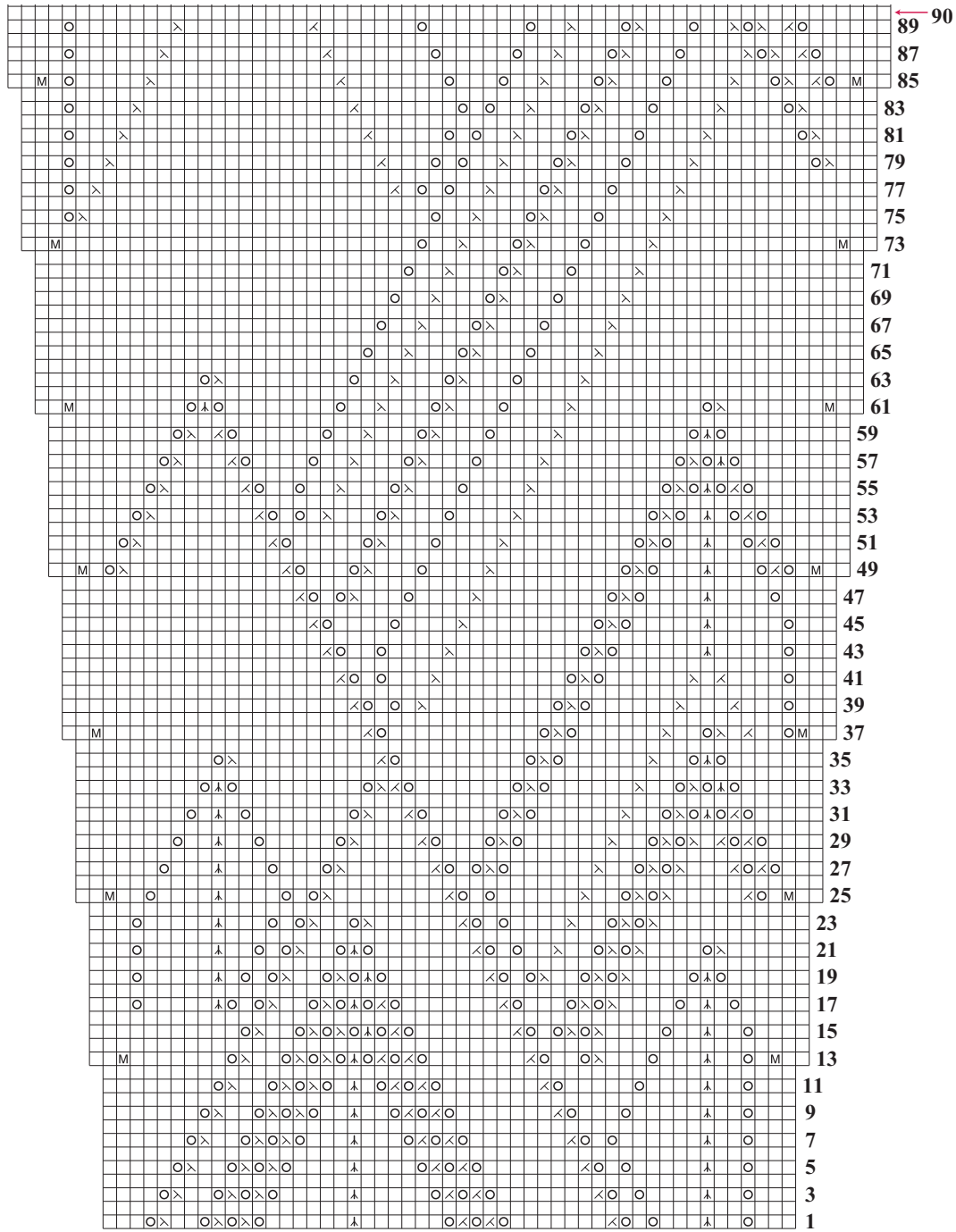


Stitch Key

- K on RS, p on WS
- ▢ P on RS, k on WS
- ⊗ K2tog
- ⊗ Ssk
- ⊗ S2kp
- Yo
- ▲ Bind off

180
179
177
175
173
171
169
167
165
163
161
159
157
155
153
151
149
147
145
143
141
139
137
135
133
131
129
127
125
123
121
119
117
115
113
111
109
107
105
103
101
99
97
95
93
91

28 V-NECK PULLOVER



51 sts

Stitch Key

- K on RS, p on WS
- P on RS, k on WS
- K2tog
- Ssk
- S2kpo
- Yo
- M1
- Bind off

SLEEVES

