

Stitch Key

- | | | | |
|--------------------|-------------------------------|---------------------------|--------------|
| □ K on RS, p on WS | ⊗ K2tog on RS,
p2tog on WS | ⊗ Ssk on RS,
ssp on WS | ○ Yarn over |
| ⊖ P on RS, k on WS | | | ⊕ Selvage st |

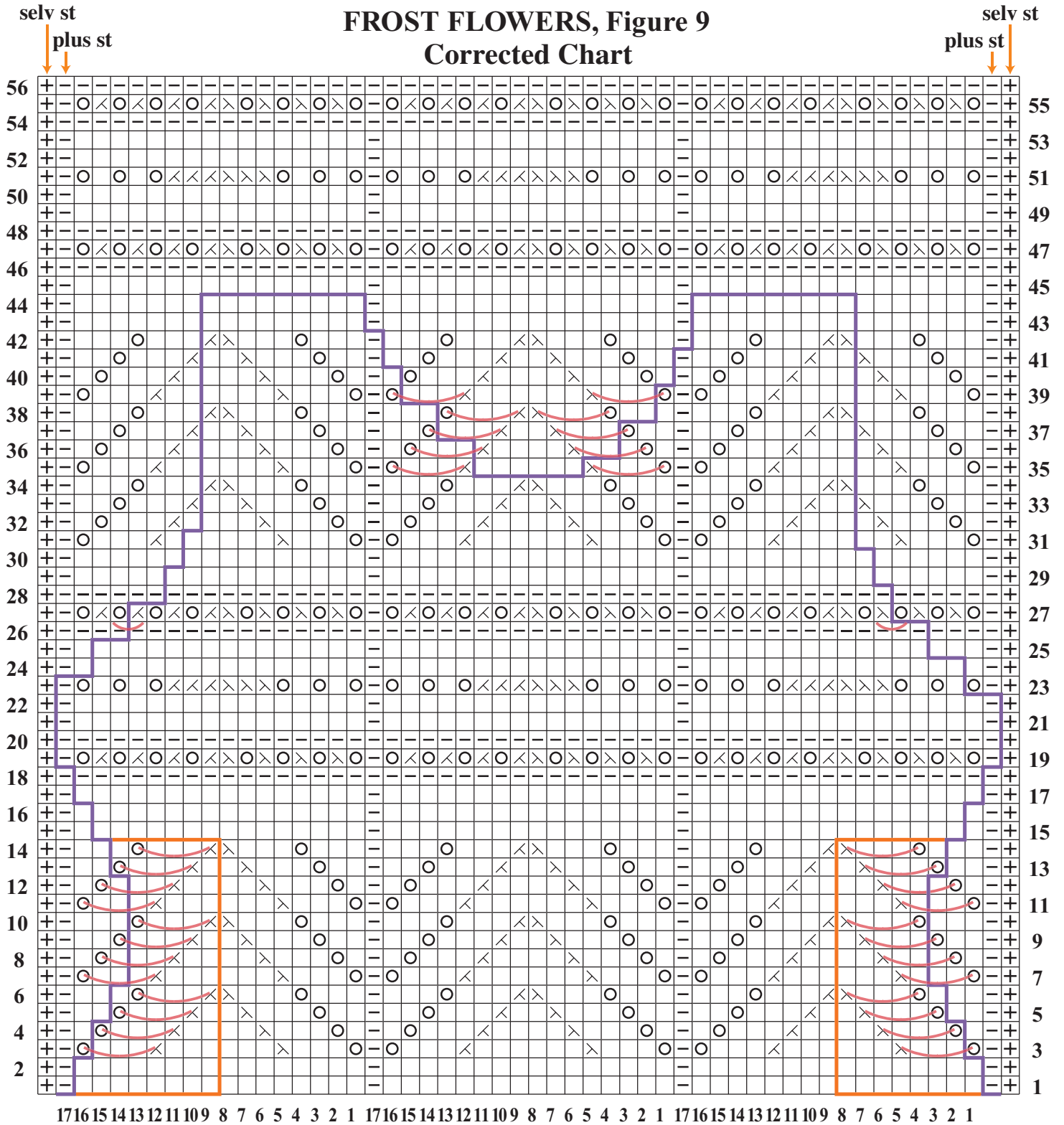
FIGURE 8: “The Shape of Lace” by Shirley Paden, Vogue Knitting Magazine Spring/Summer 2008

© SoHo Publishing Company 2008. All rights reserved. Individual, non-commercial use only. Sale, any other commercial use and any reproduction, publication or distribution prohibited.

FIGURE 8: “The Shape of Lace” by Shirley Paden
Vogue Knitting Magazine Spring/Summer 2008

© SoHo Publishing Company 2008. All rights reserved. Individual, non-commercial use only. Sale, any other commercial use and any reproduction, publication or distribution prohibited.

FROST FLOWERS, Figure 9 Corrected Chart

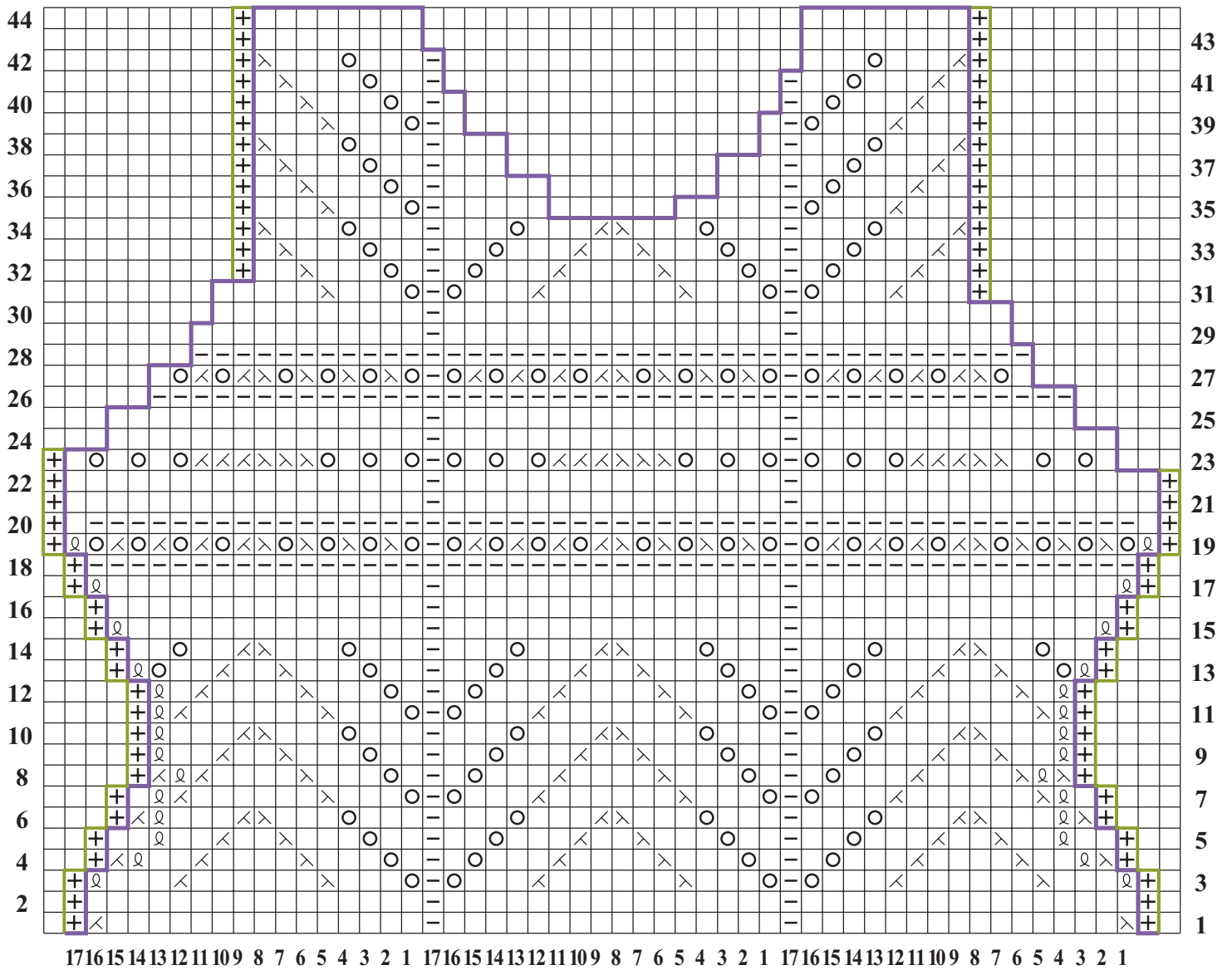


Stitch Key

- | | | |
|--------------------|-------------------------------|-----------------|
| □ K on RS, p on WS | ⊗ K2tog on RS,
p2tog on WS | ⊕ Selvage st |
| ⊖ P on RS, k on WS | ⊗ Ssk on RS,
ssp on WS | ○ Yarn over |
| | | — Linking lines |

FIGURE 9: “The Shape of Lace” by Shirley Paden, Vogue Knitting Magazine Spring/Summer 2008

FROST FLOWERS, Figure 9a Clean Corrected Chart



Stitch Key

- | | | |
|---|--|-------------------------------------|
| <input type="checkbox"/> K on RS, p on WS | <input type="checkbox"/> K2tog on RS,
p2tog on WS | <input type="checkbox"/> Yarn over |
| <input type="checkbox"/> P on RS, k on WS | <input type="checkbox"/> Ssk on RS,
ssp on WS | <input type="checkbox"/> Selvage st |

FIGURE 9a: “The Shape of Lace” by Shirley Paden, Vogue Knitting Magazine Spring/Summer 2008

© SoHo Publishing Company 2008. All rights reserved. Individual, non-commercial use only. Sale, any other commercial use and any reproduction, publication or distribution prohibited.