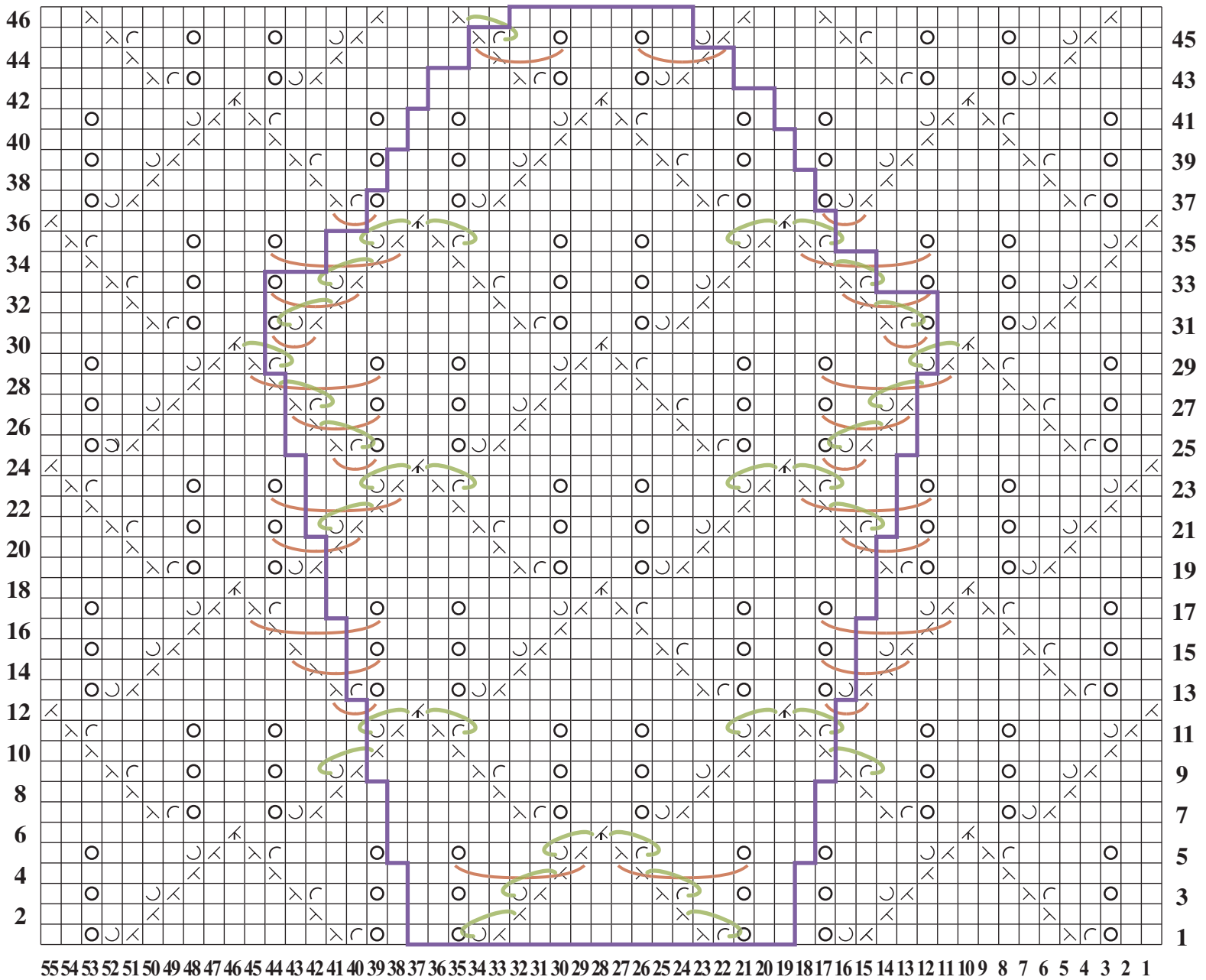


SPADE STITCH PATTERN, Figure 14

Corrected Version



Stitch Key

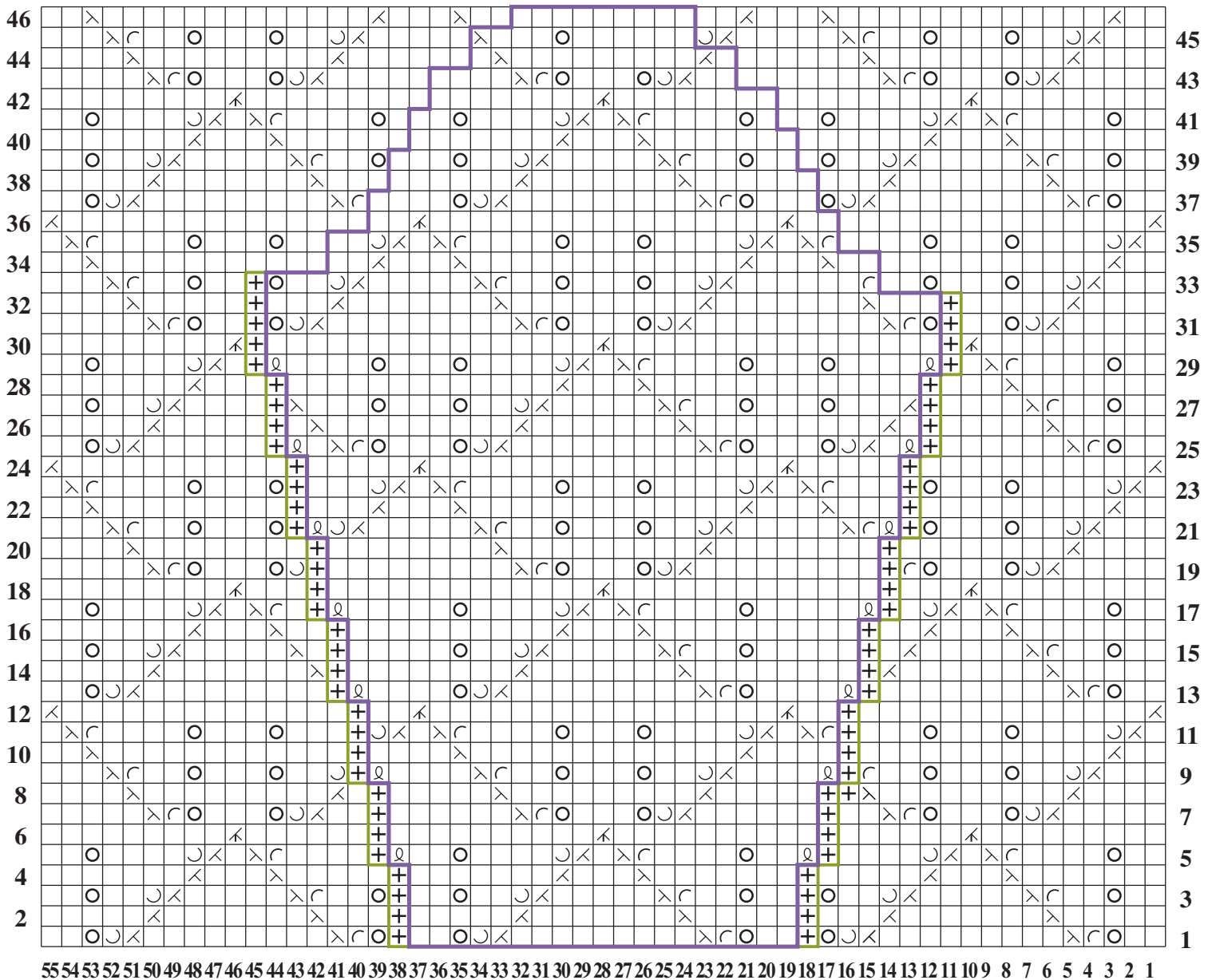
- | | | |
|----------------------------|-------------|----------|
| □ K on RS, p on WS | ⊠ P3tog | ⊔ Yo, k1 |
| ⊗ K2tog on RS, p2tog on WS | ⊙ Yarn over | ⊞ K1, yo |
| ⊗ Ssk on RS, ssp on WS | | |

FIGURE 14: “The Shape of Lace” by Shirley Paden, Vogue Knitting Magazine Spring/Summer 2008

© SoHo Publishing Company 2008. All rights reserved. Individual, non-commercial use only. Sale, any other commercial use and any reproduction, publication or distribution prohibited.

SPADE STITCH PATTERN, Figure 14a

Clean Version



Stitch Key

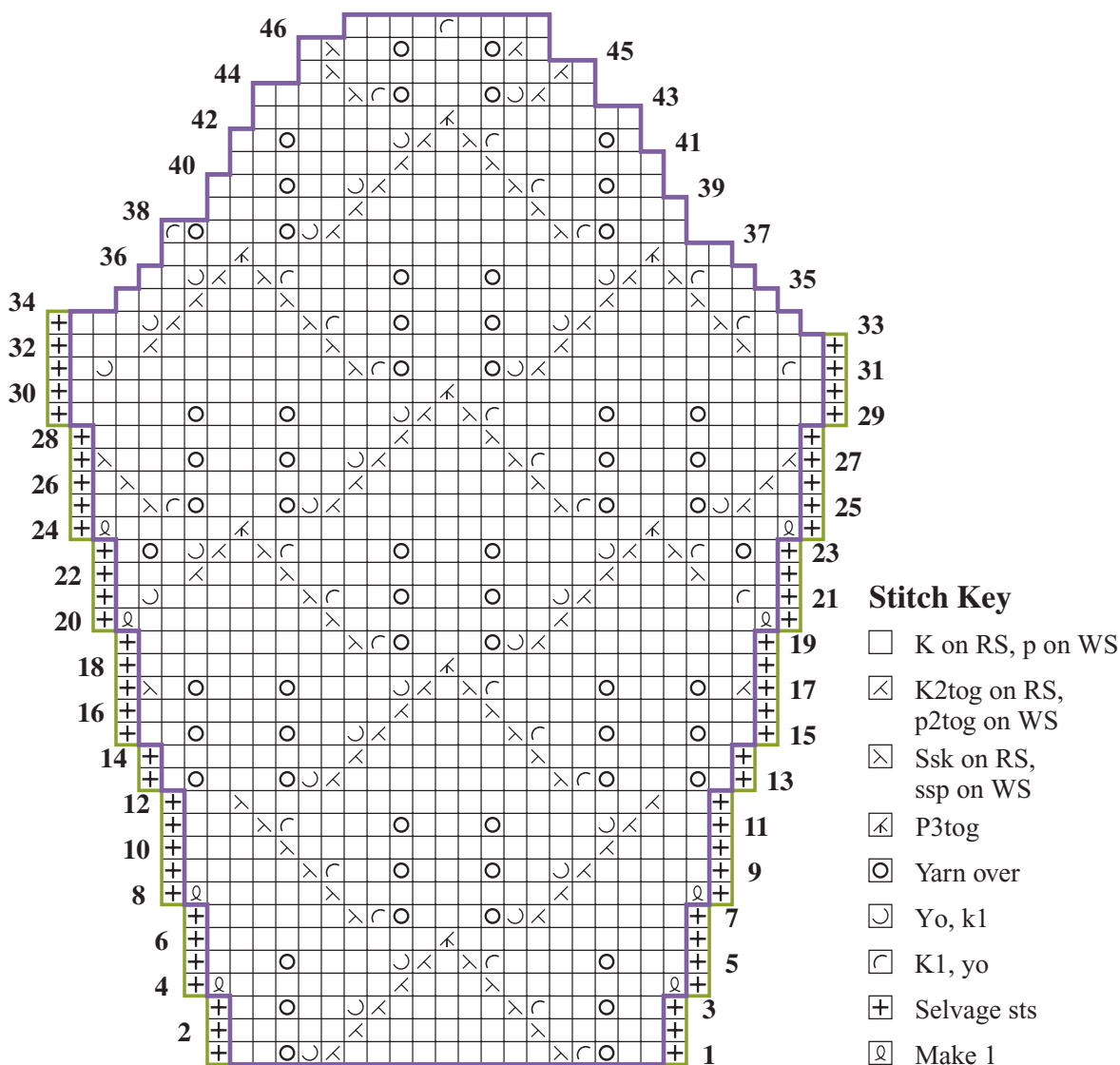
- | | | |
|----------------------------|----------|---------------|
| □ K on RS, p on WS | ⊗ P3tog | ⊙ Yarn over |
| ⊗ K2tog on RS, p2tog on WS | ⊙ Yo, k1 | ⊕ Selvage sts |
| ⊗ Ssk on RS, ssp on WS | ⊕ K1, yo | ⊙ Make 1 |

FIGURE 14a: “The Shape of Lace” by Shirley Paden, Vogue Knitting Magazine Spring/Summer 2008

© SoHo Publishing Company 2008. All rights reserved. Individual, non-commercial use only. Sale, any other commercial use and any reproduction, publication or distribution prohibited.

SPADE STITCH PATTERN, Figure 14b

Nontraditional shaping



The increase row flow for the sleeves and the decrease flow for the sleeve cap on this chart are different than those on the “Clean” chart because we are manipulating the shaping elements to maintain as much of the pattern as possible as we shape our garment piece. When you reach the top of the upper arm and the top of the sleeve cap, the stitch count will be the same as on the “Clean” chart.

EXAMPLE: The vertical band of stockinette that you see at the bottom of the sleeve made from the “Clean” chart is there because the 3 stacked edge yarn overs had to be eliminated when we used the traditional shaping method of pairing the traveling companions. On the second sleeve we have maintained the YOs by making the following adjustments: On Rows 13 & 15

there are no actual M1 sts at the edges. Instead, we use the YOs to increase the width on both sides without any accompanying decreases. This will allow us to both maintain the pattern flow and shape the sleeve. On Row 17, we want a YO to maintain the pattern flow, but we do not want to increase the sleeve width, so at both edges we add decreases to match the YOs.

Figure 14b: “The Shape of Lace” by Shirley Paden, Vogue Knitting Magazine Spring/Summer 2008

© SoHo Publishing Company 2008. All rights reserved. Individual, non-commercial use only. Sale, any other commercial use and any reproduction, publication or distribution prohibited.

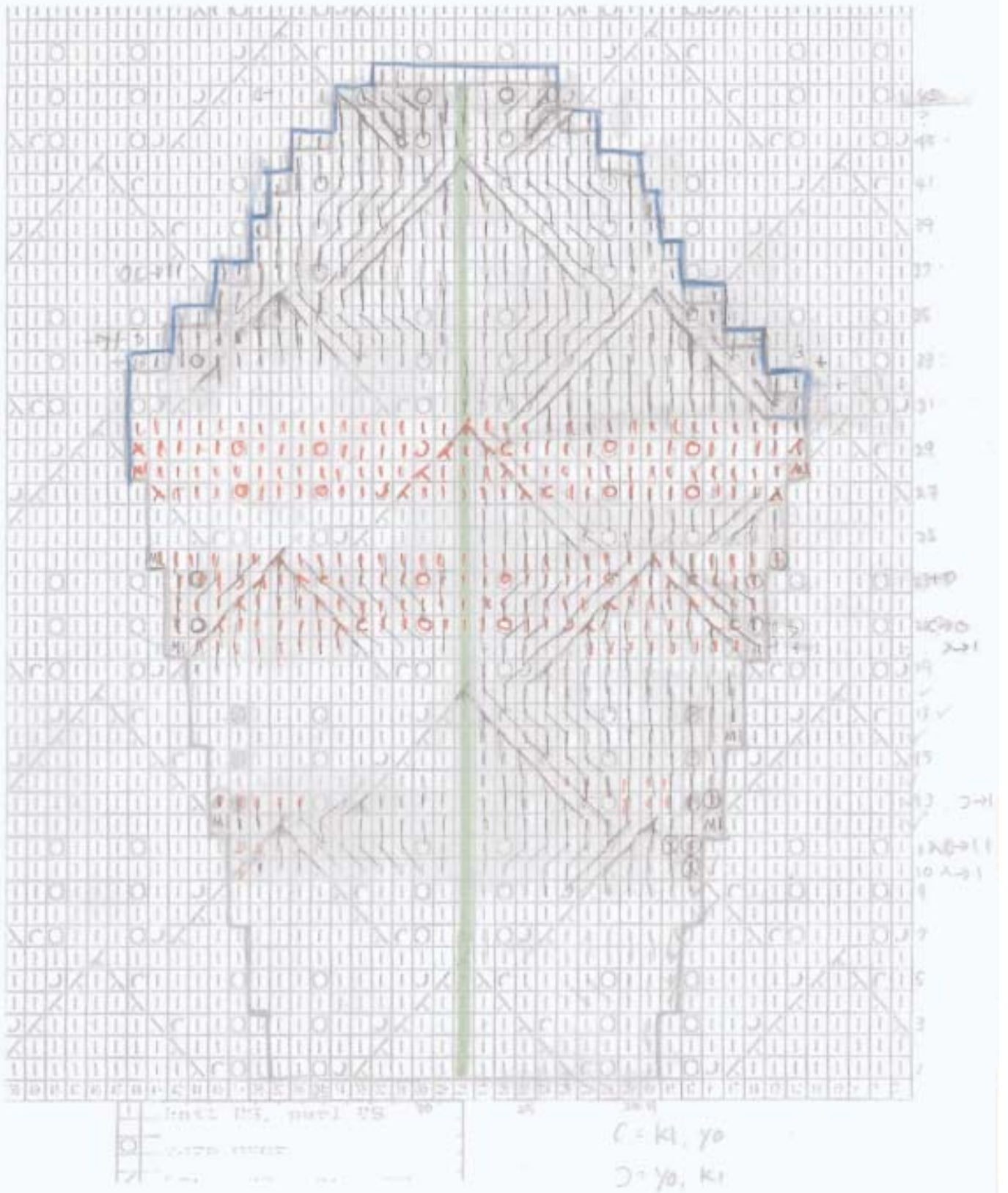


Figure 14, LACE OVERLAY

“The Shape of Lace” by Shirley Paden, Vogue Knitting Magazine Spring/Summer 2008

© SoHo Publishing Company 2008. All rights reserved. Individual, non-commercial use only. Sale, any other commercial use and any reproduction, publication or distribution prohibited.